



Hiring Small Businesses for Large-Scale Projects



Marcus Huff



Kimberly Dokes





Henry Ford High School



Mumford High School



Western High School

DPS Bond High Schools

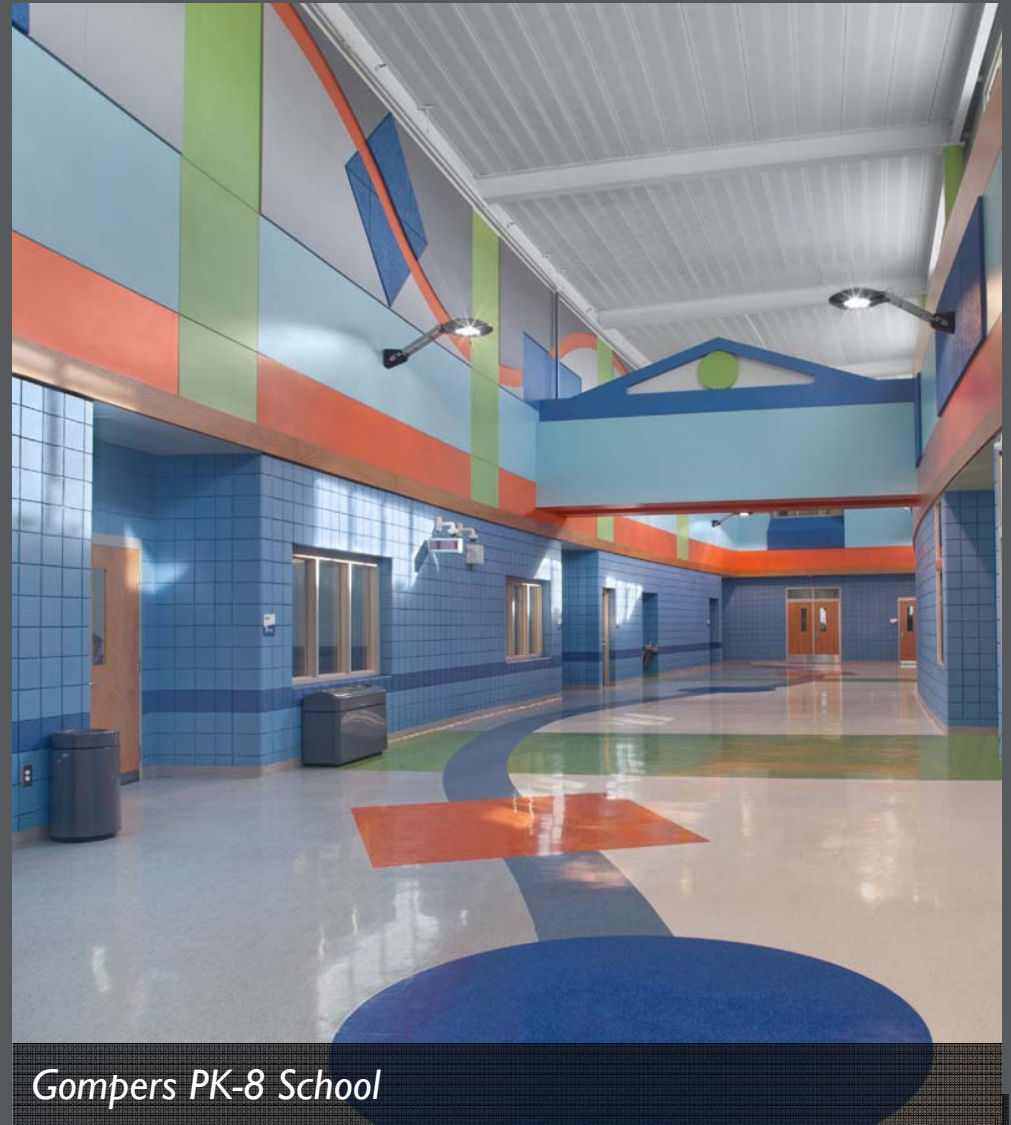


Martin Luther King Jr. Sr. High School

DPS Bond High Schools



Earhart PK-8 School



Gompers PK-8 School



Bunche PK-8 School

DPS Bond PK-8 Schools



Earhart PK-8 School

DPS Bond PK-8 Schools



Mumford High School Demo



Mackenzie PK-8 School Demo

DPS Bond Demolition Projects



Office of Public Safety HQ
(Command Center)



Gompers PK-8 School



Munger PK-8 School



Henry Ford High School



City-Wide

Various School Ribbon Cuttings

Program Budget

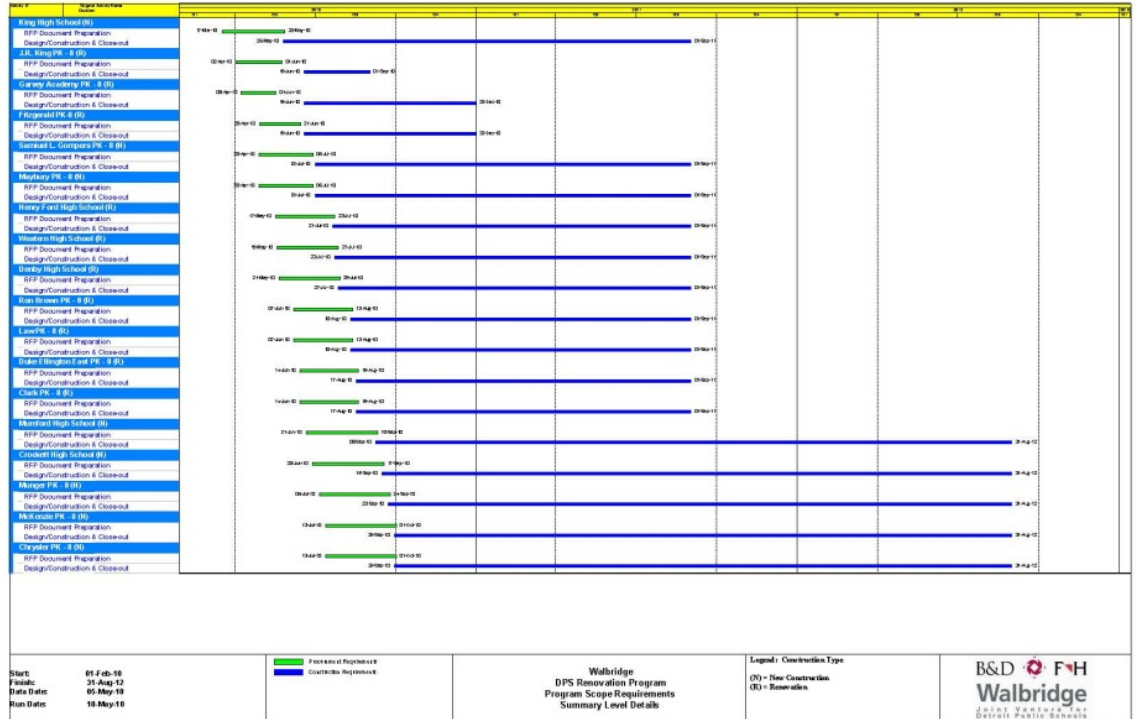
1 SOURCES

2	QSCB 2009A	\$	90,000,000
3	BAB 2009B	\$	200,000,000
4	BAB 2010B	\$	49,630,000
5	QSCB 2010A	\$	160,910,000

7	TOTAL SOURCES	\$	500,540,000
---	----------------------	-----------	--------------------

9 USES

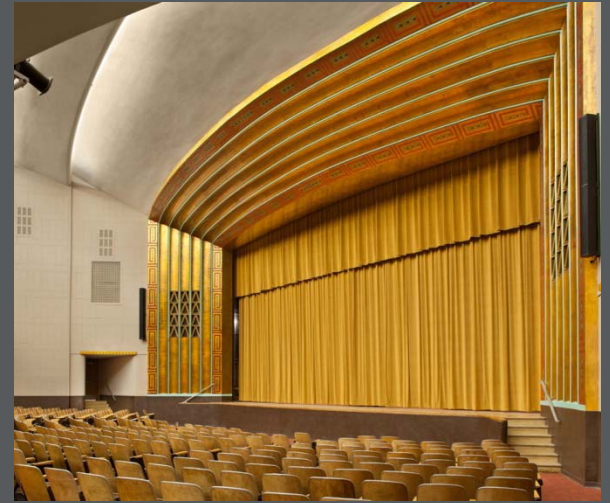
10	New Schools	\$	260,268,354
11	Renovations	\$	138,935,874
12	Decommissioning	\$	6,077,413
13	Demolition	\$	6,555,990
14	Security Initiative	\$	16,991,250
15	Program Management Services	\$	23,802,256
16	Soft / Administrative Costs	\$	13,481,482
17	Issuance Costs	\$	5,437,946
18	Summer Initiative	\$	21,539,435
19	Command Center	\$	7,450,000
21	TOTAL USES	\$	500,540,000



Program Budget and Schedule

School	Design/Builder	% Complete	DHQ Sub Inclusion		Trade Inclusion		Non-trade Inclusion	
			Contract %	Current %	PLA %	Current %	Contract %	Current %
Earhart	Brinker / Christman	98%	40%	51%	65%	37%	40%	58%
Gompers	Brinker / Christman	98%	40%	50%	65%	39%	40%	56%
Western	Colasanti / DCI	99%	67%	69%	65%	45%	61%	68%
Cass Tech	Homrich	93%	60%	79%	65%	61%	60%	65%
Ford	KEO / McCarthy Smith	93%	60%	65%	65%	42%	40%	63%
Denby	O'Brien Edwards / Turner	106%	40%	60%	65%	41%	45%	54%
Beckham	Clark's / DeMaria	86%	60%	80%	65%	48%	50%	67%
Bunche	W-3 / Shmina	95%	50%	54%	65%	62%	50%	67%
MLK High School	Jenkins / Granger	84%	40%	32%	65%	43%	50%	47%
Northwestern	Jenkins / Granger	81%	40%	43%	65%	62%	50%	52%
Harambee Center	Clark's / DeMaria	94%	40%	65%	65%	50%	50%	63%
Munger	White / Turner	67%	50%	89%	65%	55%	60%	69%
Murrford	White / Turner	49%	50%	75%	65%	55%	50%	57%
Mackenzie	MIG / Auch	48%	60%	81%	65%	61%	60%	76%
Finney	Tooles / Clark	42%	70%	85%	65%	65%	65%	56%

DPS Bond Inclusion Numbers



Questions & Answers

