

# Trends in Auxiliary Services

New Orleans, LA  
March 16 – 19, 2008



ACUI | New Orleans | 2008

## People

Carolyn Farley  
Director, Univ. Union & Student Activities  
Univ. of North Carolina – Wilmington

Kevin Keegan  
Vice President  
Brailsford & Dunlavey

Loren Rullman  
Assoc. Vice Pres., Student Affairs  
University of Michigan

Rob White  
President  
Envision Strategies

LeNorman Strong  
Asst. Vice Pres., Student & Academic Svcs.  
Cornell University



ACUI | New Orleans | 2008

# Context

1. The role of auxiliary leader / manager is changing
2. Specific enterprise knowledge is not enough
3. Knowledge / impact boundaries blurred



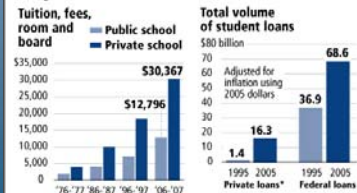
# Trend # 1

## Access & Affordability

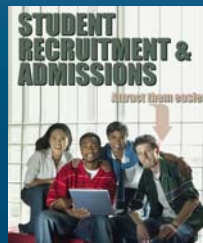
- Pricing of goods and services
- Tuition & fees "bundled"
- Price vs. value
- Taxes vs. user fees
- High university debt loads

### ACQUIRING DEBT AND HIGHER EDUCATION

As college tuitions rose in the past decade, so did the volume of student loans. Federally backed loans account for most of the volume, but private loans grew at a much faster rate.



\*Unregulated loans with interest rates that are not capped  
Sources: The College Board; Institute for Higher Education Policy

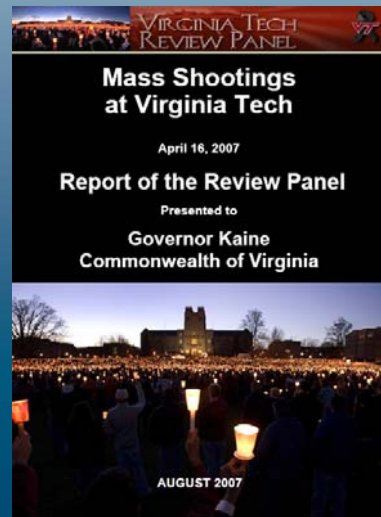


## Trend # 2

### Safety & Security Impact

- Security vs. community
- Public vs. locked
- Personal rights vs. public good
- Personal protection interests
- All hazards planning

### Students for Concealed Carry on Campus



ACUI | New Orleans | 2008

## Trend # 3

### Outsourcing

- Access to higher education
- Commodification of Higher Ed.
- Quality vs. efficiency
- Student fee aversion
- Partnering vs. profiting

### Outsourcing services: Threat or opportunity?

Iowa State considers outsourcing university e-mail system  
Associated Press  
March 10, 2008

Indiana University | Progressive Faculty Coalition

Panel Discussion

### Privatizing IU: Consequences of Outsourcing

**Outsourcing  
of non-mission-critical functions:**  
A solution to the rising cost of college attendance

ACUI | New Orleans | 2008

## Trend # 4

### Mixed use / more efficient facilities

Private/public development  
Residence Hall / Recreation Center / Food / Union / Etc.  
Common utility supply  
Seamless experience  
Academic / Non-Academic (Library / Coffee)



Rendezvous



ACUI | New Orleans | 2008

## Trend # 5

### Blending of Boundaries

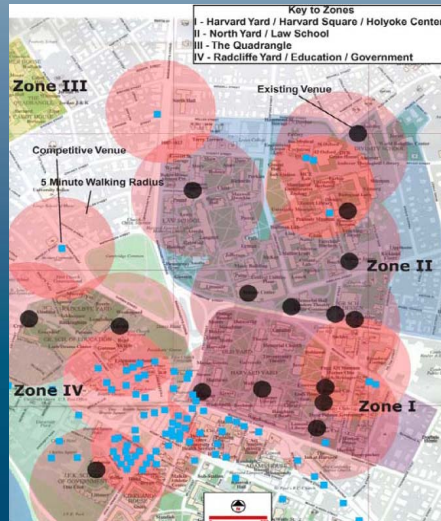


ACUI | New Orleans | 2008

## Trend # 6

### Service Proliferation

Community vs. convenience  
Subsidy vs. profitable  
Strategic vs. evolving  
Food, recreation, lounges  
Retail, bookstores  
Urban development partner



ACUI | New Orleans | 2008

## Trend # 7

### Sustainability



Organic Consumers Association

CAMPAGNING FOR HEALTH,  
JUSTICE, SUSTAINABILITY,  
PEACE, AND DEMOCRACY



ACUI | New Orleans | 2008

## Trend # 8



### Rising Expectations

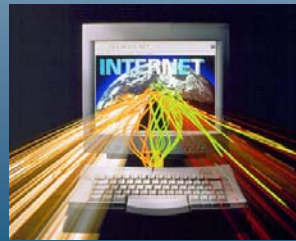


ACUI | New Orleans | 2008

## Trend # 9

### Consumer Activism

- Savvy consumers
- Price sensitivity
- Market comparison
- Informed
- Consumer immaturity
- No limits on choice



ACUI | New Orleans | 2008

## Trend # 10

### Food Control

Cultural & Religious  
Increasing Vegetarian & Vegan  
Allergies (wheat, nuts, seafood, milk, etc.)  
Right to know ingredients



[Click here for our list of Wheat-Free products.](#)



ACUI | New Orleans | 2008

## Trend # 11

### Demographic Changes

Socioeconomic stratification  
Class divide  
Racial population changes  
Access to Higher Ed.  
"Country club" reaction

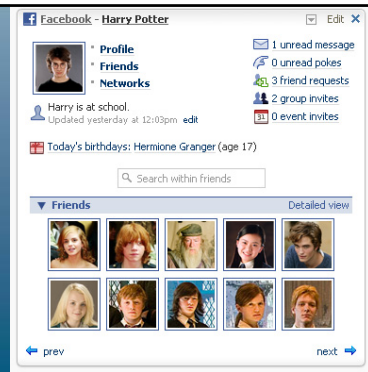


ACUI | New Orleans | 2008

## Trend # 12

### Personalization

- Roommate matching
- Food customization
- Service availability
- Organic nature of Facebook



## Trend # 13

### Technology / Touch Balance

- Differing communication styles
- Service transaction via technology
- Low labor / high tech
- How much is enough?





## Summary - Trends

- Access & Affordability
- Safety & Security Impact
- Outsourcing
- Mixed Use / More Efficient Facilities
- Blending of Boundaries
- Service Proliferation
- Sustainability
- Rising Expectations
- Consumer Activism
- Food Control
- Demographic Changes
- Personalization
- Technology / Touch Balance

